

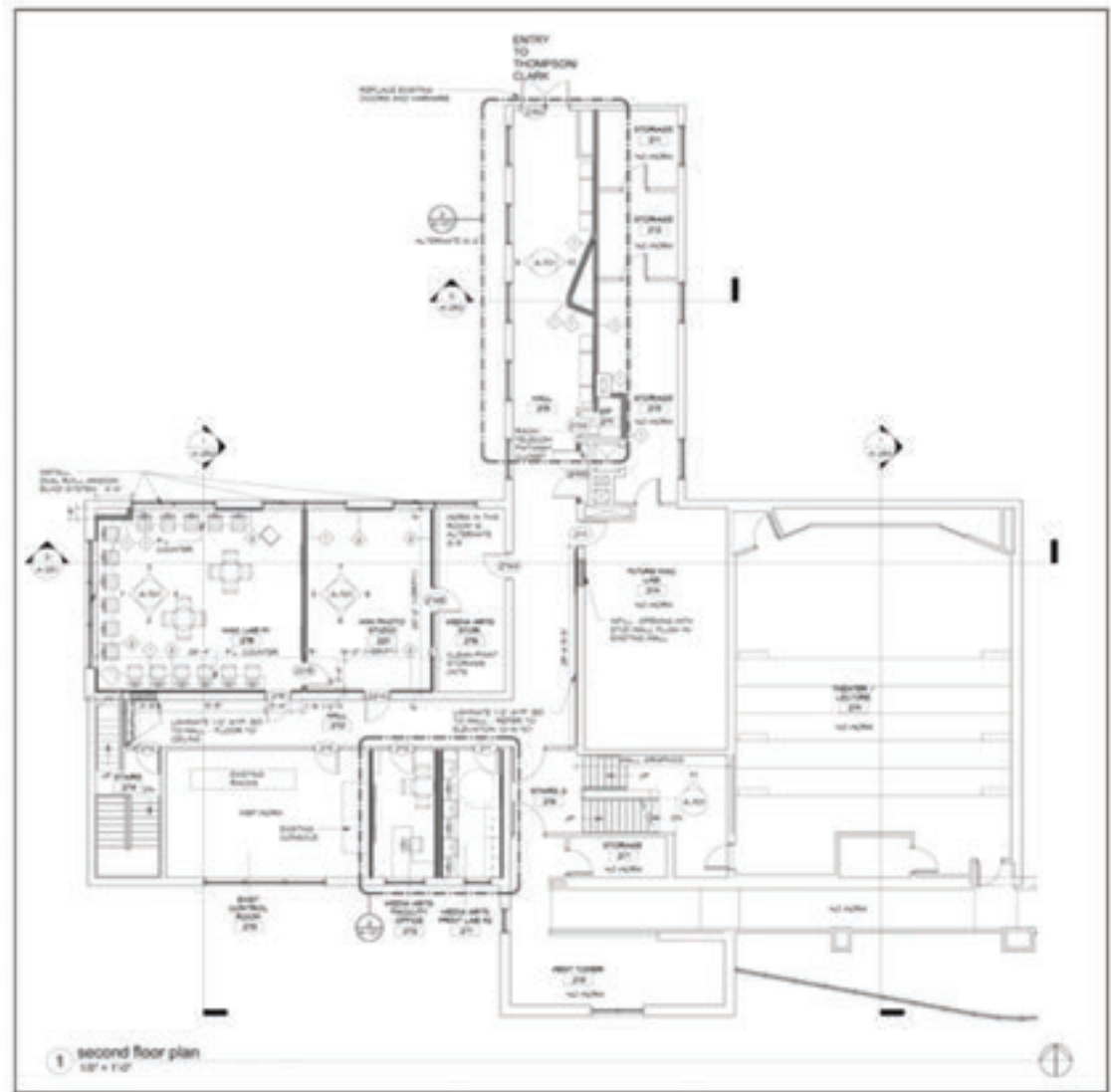
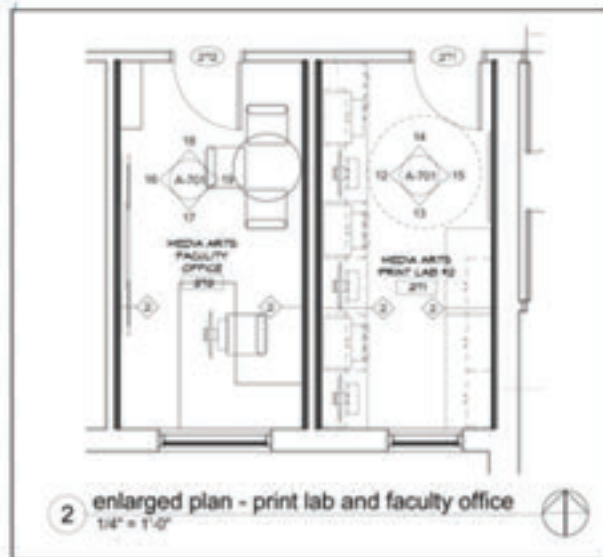
**Westminster College Media Art + Design Project**



The following is information regarding the new Media Art + Design program facilities that opened in August 2013. As the Program Director and Associate Professor, I was responsible for the creation of the curriculum (14 new courses) and the lead on the project. Other responsibilities included, initial space design, selection of architect, collaboration with architect on selection of furnishings and interior design. In addition, I was responsible for the new identity, promotion materials and graphic application of the identity to the interior spaces (wall graphics). I also specified and purchased computers, software and equipment.

**Westminster College Media Art + Design Project**

*Architectural rendering of new Media Art + Design space. Included are Macintosh computer labs, digital photo, video and filmmaking studios, printing labs, equipment cages and 3D printing/rapid prototyping lab and faculty offices.*  
Architect: BSHM Architects



Westminster College Media Art + Design Project

*Media Art + Design visual identity consisting of logo, website and recruitment brochure. All produced by MA+D faculty.*



Westminster College Media Art + Design Project

*Hallways showing elements of the graphic identity. Also shown is one of two 19 seat Mac labs.*



Westminster College Media Art + Design Project

*Shown is the 3D printing/rapid prototyping lab featuring 3D printers (additive manufacturing), CNC mill, manual mill and lathe (subtractive manufacturing).*



Westminster College Media Art + Design Project

*Shown are two digital photography, filmmaking, video and broadcast studios. The facilities feature a 1700 sq. ft. main studio and a 700 sq. ft. multi-purpose studio; both with equipment checkout cages.*



## Kurt R. Roscoe

Associate Professor - Program Director

### Westminster College Media Art + Design Project

*Shown are equipment checkout cages, featuring state-of-the-art digital photography, video, filmmaking and broadcast equipment. Specialized cameras include RED Digital Cinema Mysterium X digital filmmaking camera and a Phantom Miro high-speed camera. Other equipment includes LED lighting, digital audio equipment, jibs and rigs, cranes and digital motion control equipment.*



**Westminster College Media Art + Design Project**

**MEDIA ART + DESIGN COURSES**

MA 110	Design Principles + Practices
MA 120	Digital Photography + Imaging
MA 240	History of Design and Advertising
MA 260	Typography
MA 320	Packaging Design
MA 340	Corporate Identity + Branding
MA 350	2D: Motion Graphics + Visual Effects
MA 360	Advanced Design + Advertising
MA 380	3D: Modeling + Animation
MA 400	Digital Video + Cinema: Pre production
MA 410	Digital Video + Cinema: Production (camera/equipment)
MA 420	Digital Video + Cinema: Production (directing/cinematography)
MA 440	Digital Video + Cinema: Post-production (editing)
MA 560	Internship
MA 601/602	Capstone
ART 102	Foundation Drawing
BC 112	Digital Movie making
BC 102	Audio Production
FS 256	Screen writing

+ General requirements and electives

**HARDWARE & EQUIPMENT**

**3D PRINTERS (ADDITIVE MANUFACTURING)**

3D Systems CubeX Duo  
XYZ Printing da Vinci

**DIGITIZING EQUIPMENT**

Wacom Cintiq Drawing Displays

**DIGITAL CINEMA AND VIDEO**

RED Digital Cinema EPIC Mysterium-X Camera  
Vision Research Phantom Miro M320S  
Canon C300, 60D, 5D MKII Cameras  
JVC GY-HM650U  
Blackmagic Pocket Cinema Camera  
Kessler Crane CineDrive Digital Motion Control Equipment  
Redrock Micro DSLR rigs and Follow Focus  
Edelkrone Rigs and Sliders  
Various Cranes and Jibs

**MACHINING (SUBTRACTIVE MANUFACTURING)**

Roland CNC Vertical Mill  
Manual Lathes, Vertical And Horizontal Mills  
Various other metal working equipment and instruments

**SOFTWARE APPLICATIONS**

- Adobe Acrobat
- Adobe After Effects
- Adobe Dreamweaver
- Adobe Flash
- Adobe Illustrator
- Adobe InDesign
- Adobe Photoshop
- Adobe Premiere
- Apple Final Cut Pro X
- Apple Keynote
- Apple Motion
- Autodesk Inventor Fusion
- Autodesk SketchBook Pro
- Maxon Cinema 4d
- Microsoft Office
- Nemechek Vectorworks CAD
- Nevercenter Silo